

Sec. 23

24' UPPER ROAD

24' ROAD

Sec. 26

SEC. 23

SEC. 33

SEC. 35

Sec. 32

24' LOWER ROAD

Sec. 33

ALL SOULS CEMETERY
EAST PART
SECTION 24

SCALE: 1" = 20' T.H. MARCH 27, 1972

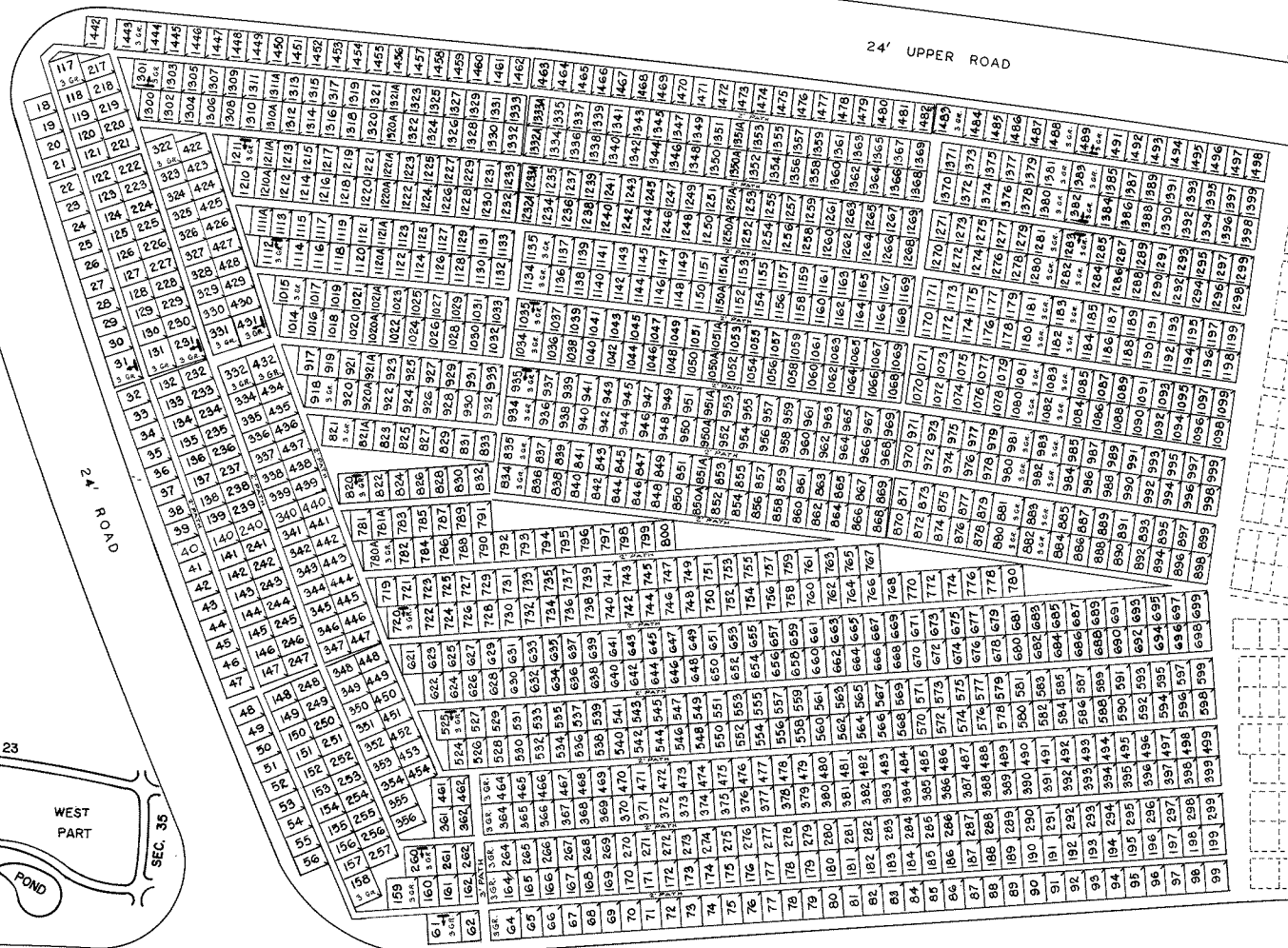
NOTE:
THE LOT NUMBER IS PLACED IN THE UPPER
RIGHT HAND CORNER OF LOTS AS YOU FACE
THE LOT AND IS INDICATED THUS

LOCATION OF GR. MARKER SHOWN THUS
↑
ARROW INDICATES DIRECTION GRAVE
MARKERS WILL FACE.

ALL LOTS ARE 2 GRAVE LOTS EXCEPT
WHERE OTHERWISE NOTED.

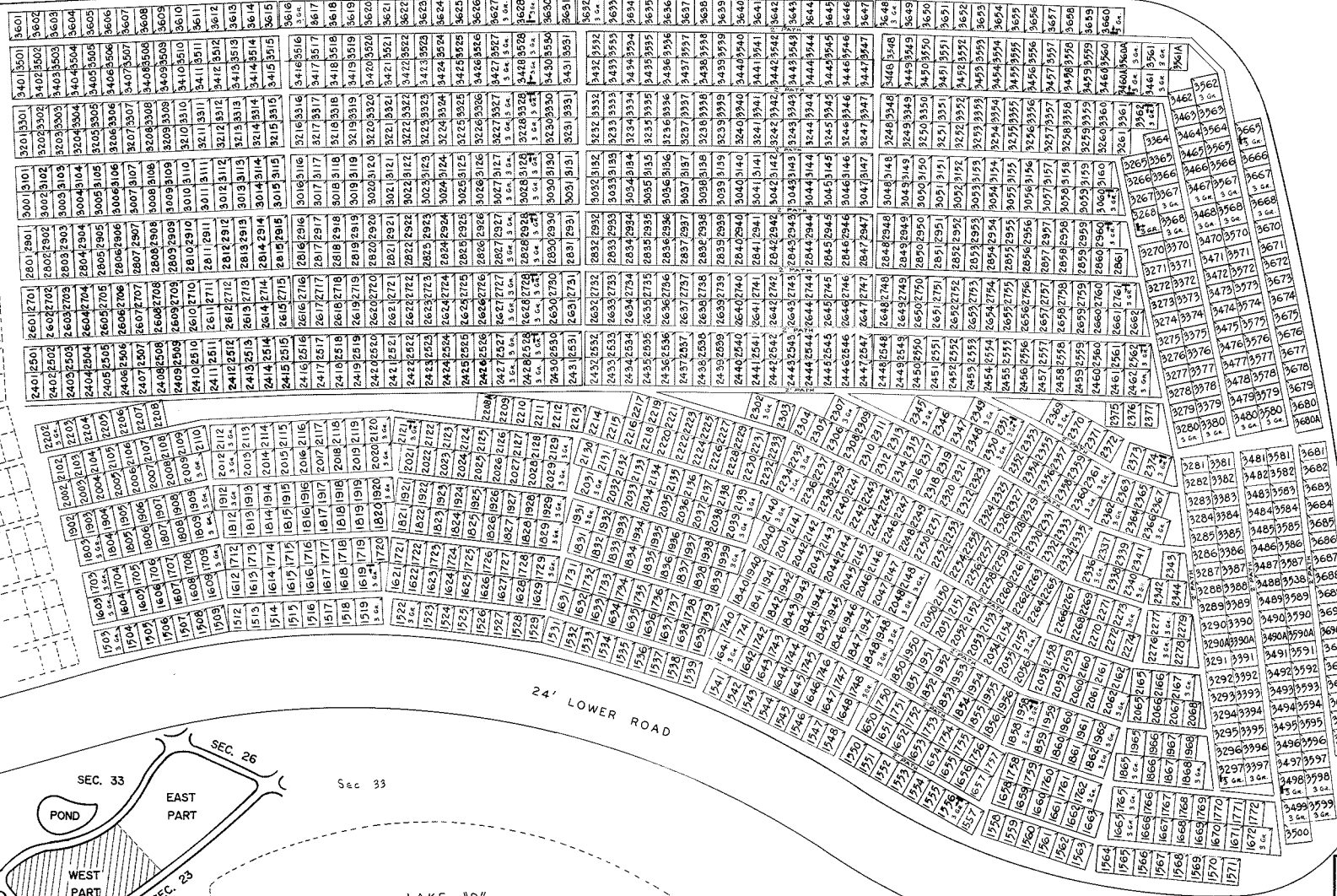
ALL 2 GR. LOTS ARE 6' X 9'
ALL 3 GR. LOTS ARE 9' X 9'

LOT SUMMARY
1165 2 GR. LOTS
64 3 GR. LOTS
1229 TOTAL LOTS



24' UPPER ROAD

24' LOWER ROAD



NOTE:
THE LOT NUMBER IS PLACED IN THE UPPER
RIGHT HAND CORNER OF LOTS AS YOU FACE
THE LOT AND IS INDICATED THUS

LOCATION OF GR. MARKER SHOWN THUS T
ARROW INDICATES DIRECTION GRAVE
MARKERS WILL FACE.

ALL LOTS ARE 2 GRAVE LOTS EXCEPT
WHERE OTHERWISE NOTED.

ALL 2 GR. LOTS ARE 6' X 9'
ALL 3 GR. LOTS ARE 9' X 9'

LOT SUMMARY

1410	2 GR. LOTS
132	3 GR. LOTS
1542	TOTAL LOTS

24' ROAD

Sec 35

ALL SOULS CEMETERY
WEST PART
SECTION 24

REV. 7-2-87
REV. 4-5-76

SCALE: 1" = 20' T.H. DEC 27, 1972