

NOTE: THE LOT NUMBERS ARE PLACED IN THE UPPER RIGHT HAND CORNER OF THE LOTS AS YOU FACE THE LOTS AND ARE INDICATED THUS

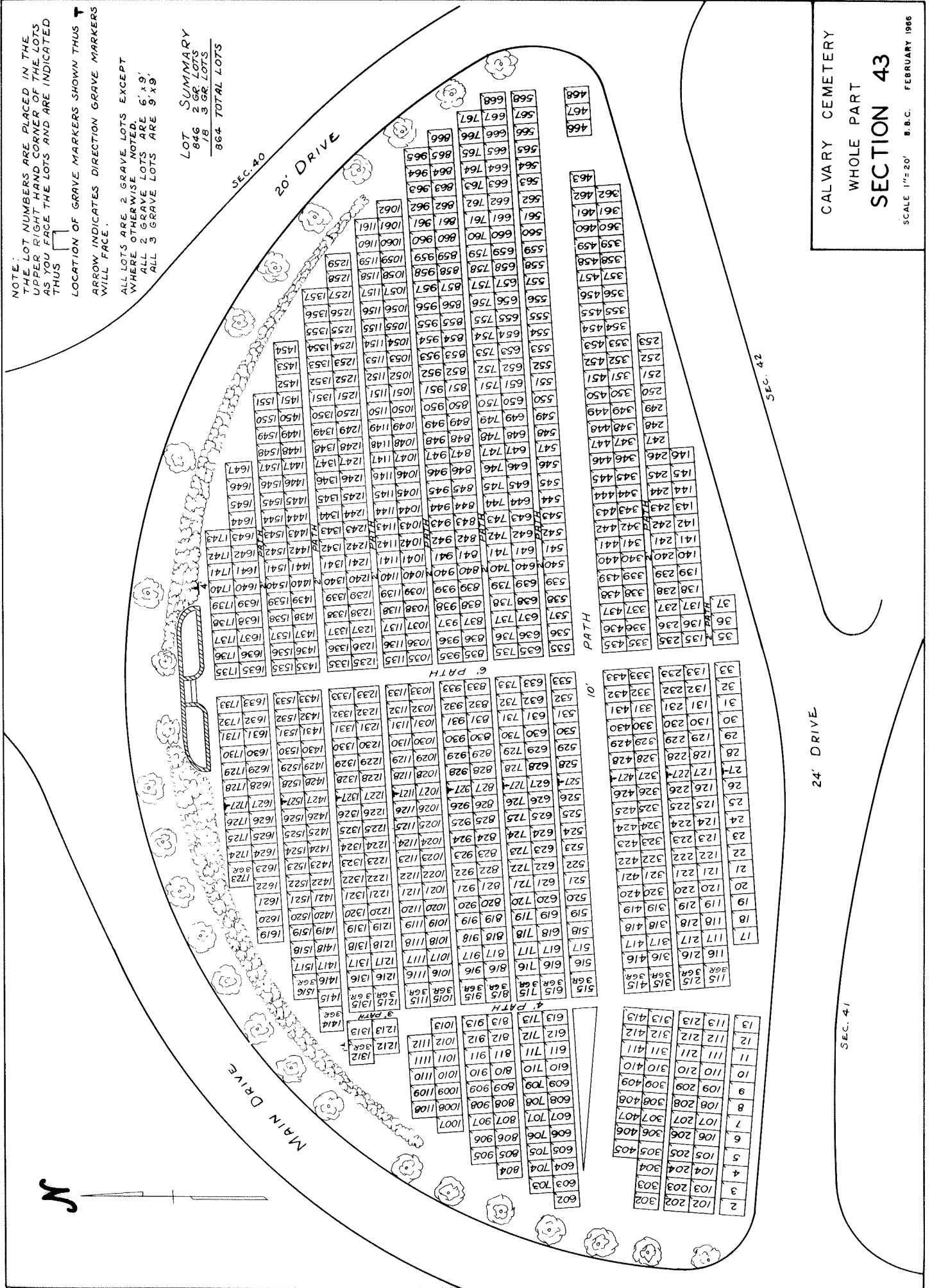
LOCATION OF GRAVE MARKERS SHOWN THUS T
ARROW INDICATES DIRECTION GRAVE MARKERS WILL FACE.

ALL LOTS ARE 2 GRAVE LOTS EXCEPT WHERE OTHERWISE NOTED.
ALL 2 GRAVE LOTS ARE 6' x 9'
ALL 3 GRAVE LOTS ARE 9' x 9'

LOT SUMMARY
846 2 GR. LOTS
18 3 GR. LOTS
864 TOTAL LOTS

CALVARY CEMETERY
WHOLE PART
SECTION 43

SCALE 1"=20' B.B.C. FEBRUARY 1966



SEC. 40

20' DRIVE

MAIN DRIVE

SEC. 42

24' DRIVE

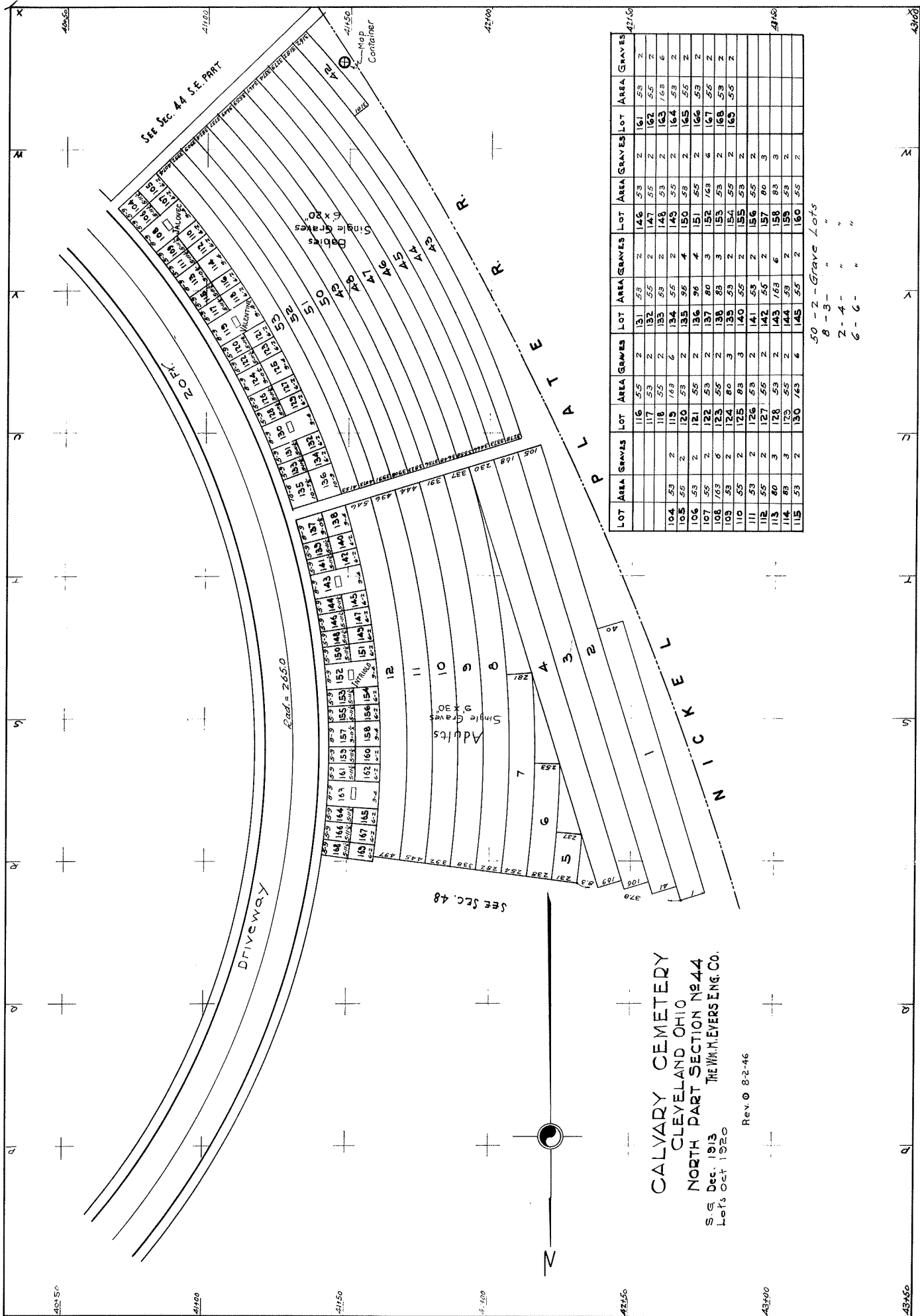
SEC. 41

6' PATH

10' PATH

PATH





LOT	AREA	GRAVES	LOT	AREA	GRAVES	LOT	AREA	GRAVES	LOT	AREA	GRAVES
104	53	2	116	55	2	131	53	2	146	53	2
105	55	2	117	53	2	132	55	2	147	55	2
106	55	2	118	55	2	133	53	2	148	53	2
107	55	2	119	53	2	134	55	2	149	55	2
108	55	2	120	53	2	135	55	2	150	53	2
109	53	2	121	55	2	136	56	4	151	55	2
110	55	2	122	53	2	137	53	2	152	53	2
111	53	2	123	55	2	138	53	3	153	53	2
112	55	2	124	53	2	139	53	2	154	55	2
113	53	2	125	55	2	140	55	2	155	53	2
114	53	2	126	53	2	141	53	2	156	55	2
115	53	2	127	55	2	142	55	2	157	53	2
			128	53	2	143	53	6	158	53	2
			129	55	2	144	53	2	159	53	2
			130	53	2	145	55	2	160	55	2

50 - 2 - Grave Lots
 8 - 3 - " "
 2 - 4 - " "
 6 - 6 - " "

CALVARY CEMETERY
 CLEVELAND OHIO
 NORTH PART SECTION No 44
 THE W.M. EVERSON & CO.
 S.G. Dec. 1913
 Lots Oct 1920

Rev. 8-2-46



SEE SEC. 48

SEE SEC. 44 S.E. PART

DRIVEWAY

Road = 26.50

Adults
 Single Graves

NICKEL

Single Graves

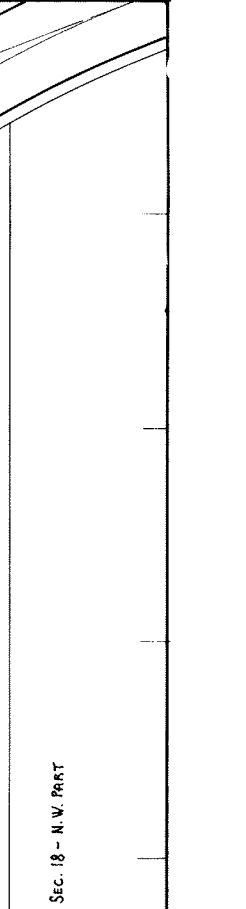
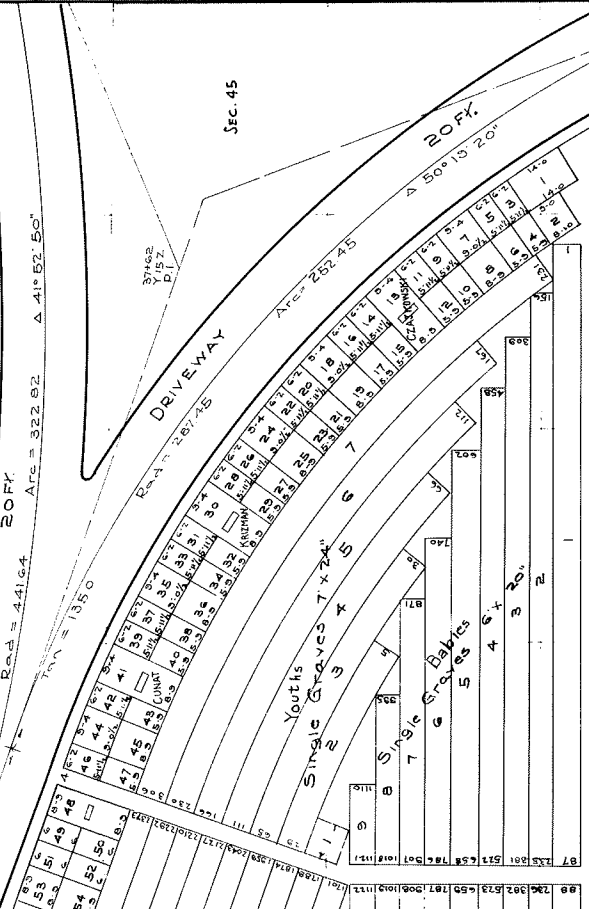
Map Container

CALVADY CEMETERY
 CLEVELAND OHIO
SOUTH EAST PART SECTION 1844
 S. G. JUNE 1911
 THE W. H. MEYERS ENG. CO.
 LOTS Oct 1920
 Note - Lot Numbers are placed in N.E. Cor. of Lots

Rev. © B-2-46

LOT	AREA GRAVE	LOT	AREA GRAVE	LOT	AREA GRAVE	LOT	AREA GRAVE	LOT	AREA GRAVE	LOT	AREA GRAVE	LOT	AREA GRAVE	LOT	AREA GRAVE					
1	126	5	16	55	2	31	55	2	46	55	2	61	55	2	76	55	2	91	161	6
2	80	2	17	53	2	32	53	2	47	53	2	62	53	2	77	53	2	92	53	2
3	55	2	18	53	2	33	53	2	48	53	2	63	53	2	78	53	2	93	53	2
4	53	2	19	53	2	34	53	2	49	53	2	64	53	2	79	53	2	94	53	2
5	55	2	20	55	2	35	55	2	50	55	2	65	55	2	80	55	2	95	55	2
6	53	2	21	53	2	36	53	2	51	53	2	66	53	2	81	53	2	96	53	2
7	83	3	22	55	2	37	55	2	52	55	2	67	55	2	82	55	2	97	55	2
8	80	3	23	53	2	38	53	2	53	53	2	68	53	2	83	53	2	98	53	2
9	55	2	24	53	2	39	53	2	54	53	2	69	53	2	84	53	2	99	53	2
10	53	2	25	53	2	40	53	2	55	53	2	70	53	2	85	53	2	100	53	2
11	55	2	26	55	2	41	55	2	56	55	2	71	55	2	86	55	2	101	55	2
12	53	2	27	53	2	42	53	2	57	53	2	72	53	2	87	53	2	102	53	2
13	163	6	28	55	2	43	55	2	58	55	2	73	55	2	88	55	2	103	55	2
14	55	2	29	53	2	44	53	2	59	53	2	74	53	2	89	53	2	104	53	2
15	53	2	30	163	6	45	80	3	60	55	2	75	53	2	90	55	2	105	53	2

73 - 3 Grave Lots
 73 - 4 " " " "
 73 - 5 " " " "
 73 - 6 " " " "



SEE SEC. 18 - N.W. PART

