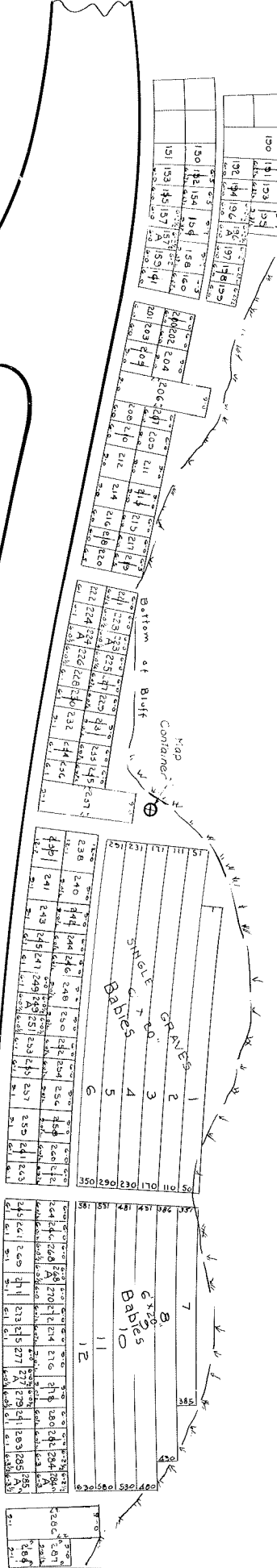
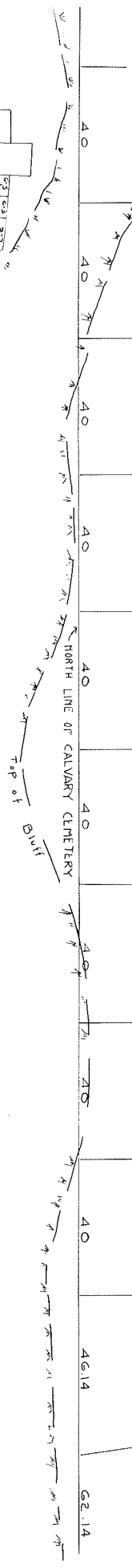


16 17 18 19 20 21 22 23 24 25 26

A. J. GAHR SUBDIVISION VOL. 42 PG. 12

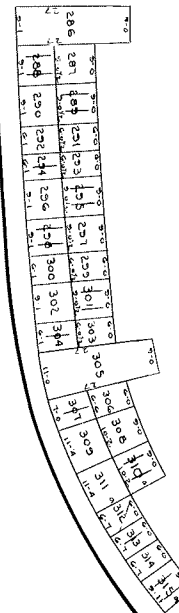


LOT AREA	AREA	AREA	AREA
197A	1580	2	
198A	1580	2	
199A	1580	2	
200A	1580	2	
201A	1580	2	
202A	1580	2	
203A	1580	2	
204A	1580	2	
205A	1580	2	

LOT AREA	AREA	AREA	AREA	AREA
131	520	520	2	
132	520	520	2	
133	520	520	2	
134	520	520	2	
135	520	520	2	
136	520	520	2	
137	520	520	2	
138	520	520	2	
139	520	520	2	
140	520	520	2	
141	520	520	2	
142	520	520	2	
143	520	520	2	
144	520	520	2	
145	520	520	2	
146	520	520	2	
147	520	520	2	
148	520	520	2	
149	520	520	2	
150	520	520	2	
151	520	520	2	
152	520	520	2	
153	520	520	2	
154	520	520	2	
155	520	520	2	
156	520	520	2	
157	520	520	2	
158	520	520	2	
159	520	520	2	
160	520	520	2	
161	520	520	2	
162	520	520	2	
163	520	520	2	
164	520	520	2	
165	520	520	2	
166	520	520	2	
167	520	520	2	
168	520	520	2	
169	520	520	2	
170	520	520	2	
171	520	520	2	
172	520	520	2	
173	520	520	2	
174	520	520	2	
175	520	520	2	
176	520	520	2	
177	520	520	2	
178	520	520	2	
179	520	520	2	
180	520	520	2	
181	520	520	2	
182	520	520	2	
183	520	520	2	
184	520	520	2	
185	520	520	2	
186	520	520	2	
187	520	520	2	
188	520	520	2	
189	520	520	2	
190	520	520	2	
191	520	520	2	
192	520	520	2	
193	520	520	2	
194	520	520	2	
195	520	520	2	
196	520	520	2	
197	520	520	2	
198	520	520	2	
199	520	520	2	
200	520	520	2	
201	520	520	2	
202	520	520	2	
203	520	520	2	
204	520	520	2	
205	520	520	2	
206	520	520	2	
207	520	520	2	
208	520	520	2	
209	520	520	2	
210	520	520	2	
211	520	520	2	
212	520	520	2	
213	520	520	2	
214	520	520	2	
215	520	520	2	
216	520	520	2	
217	520	520	2	
218	520	520	2	
219	520	520	2	
220	520	520	2	
221	520	520	2	
222	520	520	2	
223	520	520	2	
224	520	520	2	
225	520	520	2	
226	520	520	2	
227	520	520	2	
228	520	520	2	
229	520	520	2	
230	520	520	2	
231	520	520	2	
232	520	520	2	
233	520	520	2	
234	520	520	2	
235	520	520	2	
236	520	520	2	
237	520	520	2	
238	520	520	2	
239	520	520	2	
240	520	520	2	
241	520	520	2	
242	520	520	2	
243	520	520	2	
244	520	520	2	
245	520	520	2	
246	520	520	2	
247	520	520	2	
248	520	520	2	
249	520	520	2	
250	520	520	2	
251	520	520	2	
252	520	520	2	
253	520	520	2	
254	520	520	2	
255	520	520	2	

2 Grave Lots 38
 3 Grave Lots 37
 4 Grave Lots 36
 6 Grave Lots 4

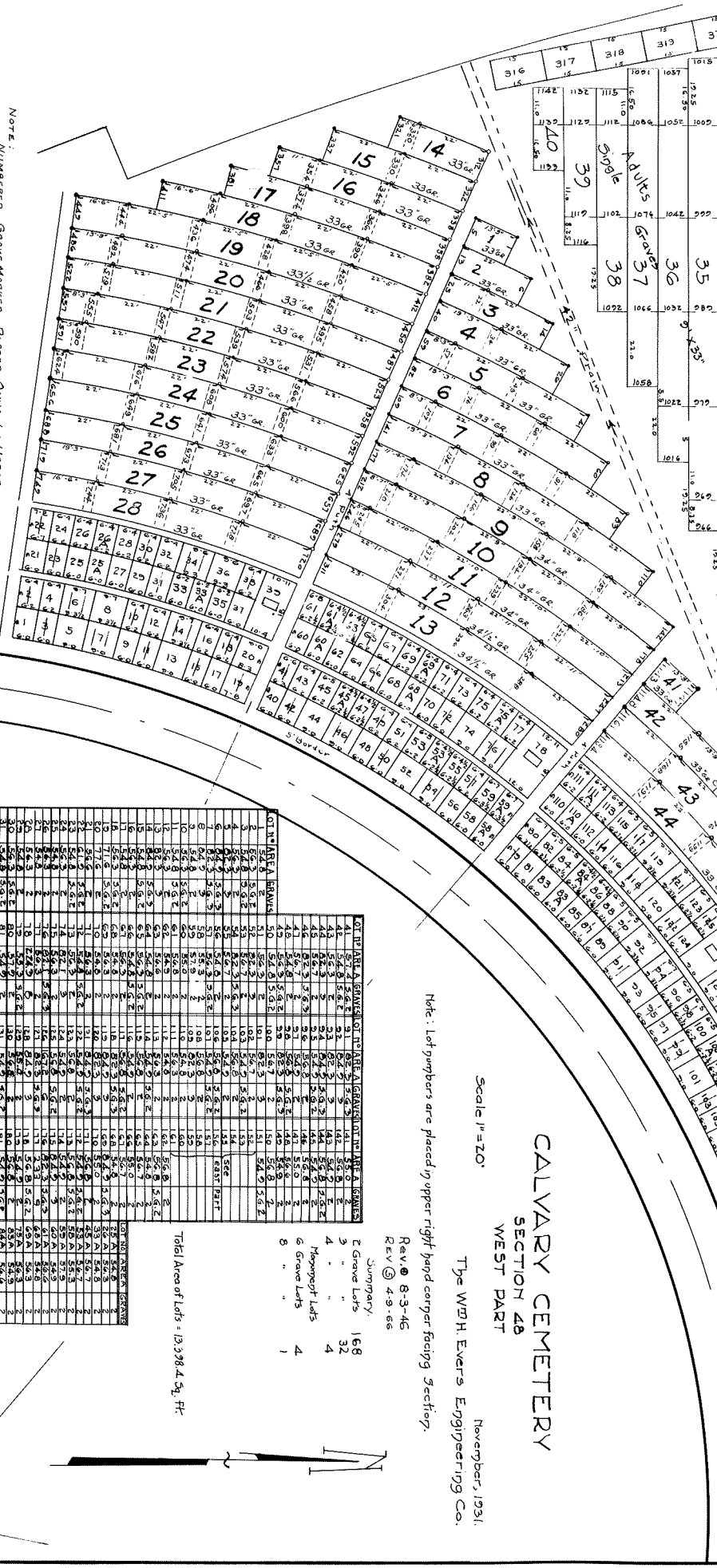
Total Area of Lots = 9776.2 Sq. Ft.



E. 110TH ST. ENTRANCE
 CALVARY CEMETERY SECTION 4B EAST PART
 THE WHEEVERS ENGINEERING CO.
 JULY, 1929
 Rev. @ 10-29-46

Note: Lot Numbers are placed in upper right hand corner facing Section

321	322	323	324	325	326	327	328	329	330	331
334	335	336	337	338	339	340	341	342	343	344
349	350	351	352	353	354	355	356	357	358	359
364	365	366	367	368	369	370	371	372	373	374
382	383	384	385	386	387	388	389	390	391	392
397	398	399	400	401	402	403	404	405	406	407



NOTE:
 NUMBERED GRAVE MARKER PLACED ONLY IN UPPER
 RIGHT HAND CORNER OF GRAVES INDICATED THUS.
 ALL GRAVES IN ROWS 1 TO 44 ARE ADULT
 GRAVES 9' x 33" x 2"

Scale 1" = 20'
 The W.H. EVERTS Engineering Co.
 November, 1931

CALVARY CEMETERY
 SECTION 48
 WEST PART

ROW	GRAVE NO.	AREA	GRAVE NO.	AREA	GRAVE NO.	AREA	GRAVE NO.	AREA	GRAVE NO.	AREA
1	1	1.00	1	1.00	1	1.00	1	1.00	1	1.00
2	2	1.00	2	1.00	2	1.00	2	1.00	2	1.00
3	3	1.00	3	1.00	3	1.00	3	1.00	3	1.00
4	4	1.00	4	1.00	4	1.00	4	1.00	4	1.00
5	5	1.00	5	1.00	5	1.00	5	1.00	5	1.00
6	6	1.00	6	1.00	6	1.00	6	1.00	6	1.00
7	7	1.00	7	1.00	7	1.00	7	1.00	7	1.00
8	8	1.00	8	1.00	8	1.00	8	1.00	8	1.00
9	9	1.00	9	1.00	9	1.00	9	1.00	9	1.00
10	10	1.00	10	1.00	10	1.00	10	1.00	10	1.00
11	11	1.00	11	1.00	11	1.00	11	1.00	11	1.00
12	12	1.00	12	1.00	12	1.00	12	1.00	12	1.00
13	13	1.00	13	1.00	13	1.00	13	1.00	13	1.00
14	14	1.00	14	1.00	14	1.00	14	1.00	14	1.00
15	15	1.00	15	1.00	15	1.00	15	1.00	15	1.00
16	16	1.00	16	1.00	16	1.00	16	1.00	16	1.00
17	17	1.00	17	1.00	17	1.00	17	1.00	17	1.00
18	18	1.00	18	1.00	18	1.00	18	1.00	18	1.00
19	19	1.00	19	1.00	19	1.00	19	1.00	19	1.00
20	20	1.00	20	1.00	20	1.00	20	1.00	20	1.00
21	21	1.00	21	1.00	21	1.00	21	1.00	21	1.00
22	22	1.00	22	1.00	22	1.00	22	1.00	22	1.00
23	23	1.00	23	1.00	23	1.00	23	1.00	23	1.00
24	24	1.00	24	1.00	24	1.00	24	1.00	24	1.00
25	25	1.00	25	1.00	25	1.00	25	1.00	25	1.00
26	26	1.00	26	1.00	26	1.00	26	1.00	26	1.00
27	27	1.00	27	1.00	27	1.00	27	1.00	27	1.00
28	28	1.00	28	1.00	28	1.00	28	1.00	28	1.00
29	29	1.00	29	1.00	29	1.00	29	1.00	29	1.00
30	30	1.00	30	1.00	30	1.00	30	1.00	30	1.00
31	31	1.00	31	1.00	31	1.00	31	1.00	31	1.00
32	32	1.00	32	1.00	32	1.00	32	1.00	32	1.00
33	33	1.00	33	1.00	33	1.00	33	1.00	33	1.00
34	34	1.00	34	1.00	34	1.00	34	1.00	34	1.00
35	35	1.00	35	1.00	35	1.00	35	1.00	35	1.00
36	36	1.00	36	1.00	36	1.00	36	1.00	36	1.00
37	37	1.00	37	1.00	37	1.00	37	1.00	37	1.00
38	38	1.00	38	1.00	38	1.00	38	1.00	38	1.00
39	39	1.00	39	1.00	39	1.00	39	1.00	39	1.00
40	40	1.00	40	1.00	40	1.00	40	1.00	40	1.00
41	41	1.00	41	1.00	41	1.00	41	1.00	41	1.00
42	42	1.00	42	1.00	42	1.00	42	1.00	42	1.00
43	43	1.00	43	1.00	43	1.00	43	1.00	43	1.00
44	44	1.00	44	1.00	44	1.00	44	1.00	44	1.00

Total Area of Lots = 13,328.4 Sq. Ft.