


CALVARY CEMETERY.
 EAST PART OF
SECTION 62.
 June 1, 1945

Scale 1/8" = 100'
 E.J.M.
 NUMBERED LOT MARKERS ARE LOCATED IN THE LOT
 CORNERS INDICATED THUS .
 GRAVE MARKERS ARE TO BE LOCATED AS INDICATED
 BY ARROWS AND SHALL FACE IN DIRECTION SHOWN
 ALL LOTS ARE 2 GRAVE LOTS EXCEPT WHERE OTHERWISE
 NOTED.

ALL 3 GRAVE LOTS ARE 6'x5'
 REV. © G.C.A. JUN 22, 1951
 610 - 2 GR. LOTS
 65 - 3 GR. LOTS
 1 - 8 GR. NON-LOTS
 733 - 10 GR. LOTS
 735 - 10 GR. LOTS

SEE SECTION 62 WEST PART.

24' DRIVE

SEE SECTION 60

CALVARY CEMETERY WEST PART OF SECTION 62

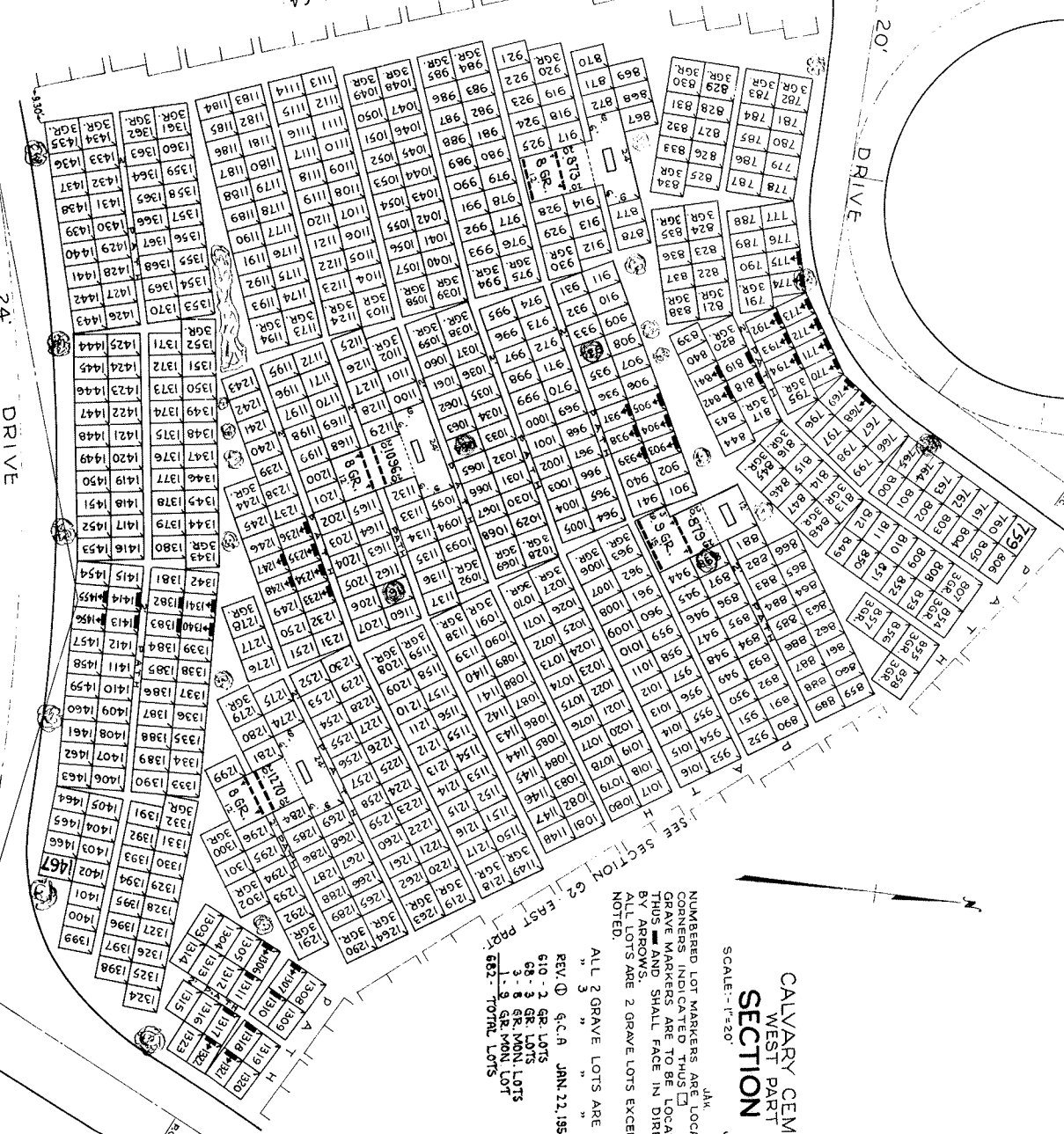
JAN.
SCALE: 1" = 20'
JUNE 5TH 1949

NUMBERED LOT MARKERS ARE LOCATED IN THE LOT CORNERS INDICATED THUS [] GRAVE MARKERS ARE TO BE LOCATED AS INDICATED THUS [] AND SHALL FACE IN DIRECTION SHOWN BY ARROWS.
ALL LOTS ARE 2 GRAVE LOTS EXCEPT WHERE OTHERWISE NOTED.

ALL 2 GRAVE LOTS ARE 6'x9'
" 3 " " " 3'x9'
REV. ① 6.C.A. JAN. 22, 1952
610 - 2 GR. LOTS
62 - 2 GR. LOTS
9 - 3 GR. LOTS
1 - 5 GR. LOTS

SEE SECTION G2 EAST PROP.
882 - 10 TRBL. LOTS

CATHOLIC CEMETERIES ASSOCIATION IS NOT RESPONSIBLE FOR ANY DECORATIONS OR PERSONAL EFFECTS LEFT ON GRAVES.



SEE SECTION G4

24 DRIVE

20 DRIVE

SEE SECTION G5