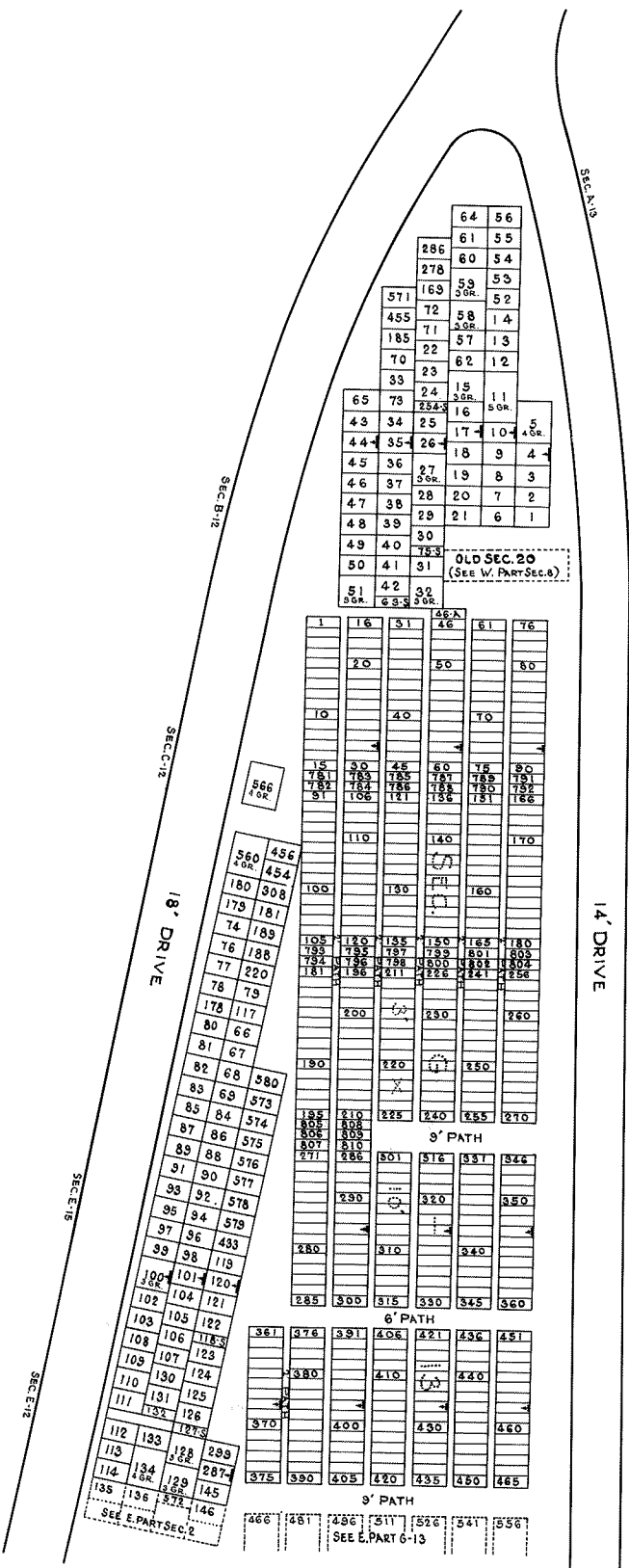
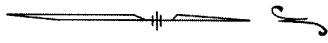


SEE G-13 (WEST PART)
435 450 465

SEC. 1	SEC. 2	SEC. 3	SEC. 4	SEC. 5	SEC. 6	SEC. 7	SEC. 8	SEC. 9
114	134	129	145	135	136	172	173	174
163	137	141	147	115	138	142	148	116
116	139	143	149	184	140	144	150	170
171	168	160	152	172	193	161	153	173
174	164	162	155	175	182	156	192	176
177	186	166	158	177	186	166	158	190
222	218	209	202	227	219	211	204	228
229	222	212	198	230	222	212	198	231
232	224	215	207	233	225	216	208	234
235	243	251	258	236	244	252	259	237
238	246	253	260	239	247	255	262	240
240	248	256	263	241	249	257	264	242
244	252	260	267	245	253	261	268	246
248	256	264	271	249	257	265	272	250
251	259	267	274	253	261	269	276	254
257	265	273	280	259	267	275	282	255
260	268	276	283	262	270	278	285	263
264	272	280	287	266	274	282	289	267
270	278	286	293	272	280	288	295	273
274	282	290	297	276	284	292	299	277
280	288	296	303	280	288	296	303	281
284	292	300	307	284	292	300	307	285
288	296	304	311	288	296	304	311	289
292	300	308	315	292	300	308	315	293
296	304	312	319	296	304	312	319	297
300	308	316	323	300	308	316	323	298
304	312	320	327	304	312	320	327	299
308	316	324	331	308	316	324	331	300
312	320	328	335	312	320	328	335	301
316	324	332	339	316	324	332	339	302
320	328	336	343	320	328	336	343	303
324	332	340	347	324	332	340	347	304
328	336	344	351	328	336	344	351	305
332	340	348	355	332	340	348	355	306
336	344	352	359	336	344	352	359	307
340	348	356	363	340	348	356	363	308
344	352	360	367	344	352	360	367	309
348	356	364	371	348	356	364	371	310
352	360	368	375	352	360	368	375	311
356	364	372	381	356	364	372	381	312
360	368	376	385	360	368	376	385	313
364	372	380	389	364	372	380	389	314
368	376	384	393	368	376	384	393	315
372	380	388	397	372	380	388	397	316
376	384	392	401	376	384	392	401	317
380	388	396	405	380	388	396	405	318
384	392	400	409	384	392	400	409	319
388	396	404	413	388	396	404	413	320
392	400	408	417	392	400	408	417	321
396	404	412	421	396	404	412	421	322
400	408	416	425	400	408	416	425	323
404	412	420	429	404	412	420	429	324
408	416	424	433	408	416	424	433	325
412	420	428	437	412	420	428	437	326
416	424	432	441	416	424	432	441	327
420	428	436	445	420	428	436	445	328
424	432	440	449	424	432	440	449	329
428	436	444	453	428	436	444	453	330
432	440	448	457	432	440	448	457	331
436	444	452	461	436	444	452	461	332
440	448	456	465	440	448	456	465	333
444	452	460	469	444	452	460	469	334
448	456	464	473	448	456	464	473	335
452	460	468	477	452	460	468	477	336
456	464	472	481	456	464	472	481	337
460	468	476	485	460	468	476	485	338
464	472	480	489	464	472	480	489	339
468	476	484	493	468	476	484	493	340
472	480	488	497	472	480	488	497	341
476	484	492	501	476	484	492	501	342
480	488	496	505	480	488	496	505	343
484	492	500	509	484	492	500	509	344
488	496	504	513	488	496	504	513	345
492	500	508	517	492	500	508	517	346
496	504	512	521	496	504	512	521	347
500	508	516	525	500	508	516	525	348
504	512	520	529	504	512	520	529	349
508	516	524	533	508	516	524	533	350
512	520	528	537	512	520	528	537	351
516	524	532	541	516	524	532	541	352
520	528	536	545	520	528	536	545	353
524	532	540	549	524	532	540	549	354
528	536	544	553	528	536	544	553	355
532	540	548	557	532	540	548	557	356
536	544	552	561	536	544	552	561	357
540	548	556	565	540	548	556	565	358
544	552	560	569	544	552	560	569	359
548	556	564	573	548	556	564	573	360
552	560	568	577	552	560	568	577	361
556	564	572	581	556	564	572	581	362
560	568	576	585	560	568	576	585	363
564	572	580	589	564	572	580	589	364
568	576	584	593	568	576	584	593	365
572	580	588	597	572	580	588	597	366
576	584	592	601	576	584	592	601	367
580	588	596	605	580	588	596	605	368
584	592	600	609	584	592	600	609	369
588	596	604	613	588	596	604	613	370
592	600	608	617	592	600	608	617	371
596	604	612	621	596	604	612	621	372
600	608	616	625	600	608	616	625	373
604	612	620	629	604	612	620	629	374
608	616	624	633	608	616	624	633	375
612	620	628	637	612	620	628	637	376
616	624	632	641	616	624	632	641	377
620	628	636	645	620	628	636	645	378
624	632	640	649	624	632	640	649	379
628	636	644	653	628	636	644	653	380
632	640	648	657	632	640	648	657	381
636	644	652	661	636	644	652	661	382
640	648	656	665	640	648	656	665	383
644	652	660	669	644	652	660	669	384
648	656	664	673	648	656	664	673	385
652	660	668	677	652	660	668	677	386
656	664	672	681	656	664	672	681	387
660	668	676	685	660	668	676	685	388
664	672	680	689	664	672	680	689	389
668	676	684	693	668	676	684	693	390
672	680	688	697	672	680	688	697	391
676	684	692	701	676	684	692	701	392
680	688	696	705	680	688	696	705	393
684	692	700	709	684	692	700	709	394
688	696	704	713	688	696	704	713	395
692	700	708	717	692	700	708	717	396
696	704	712	721	696	704	712	721	397
700	708	716	725	700	708	716	725	398
704	712	720	729	704	712	720	729	399
708	716	724	733	708	716	724	733	400
712	720	728	737	712	720	728	737	401
716	724	732	741	716	724	732	741	402
720	728	736	745	720	728	736	745	403
724	732	740	749	724	732	740	749	404
728	736	744	753	728	736	744	753	405
732	740	748	757	732	740	748	757	406
736	744	752	761	736	744	752	761	407
740	748	756	765	740	748	756	765	408
744	752	760	769	744	752	760	769	409
748	756	764	773	748	756	764	773	410
75								



LOCATION OF GRAVE MARKERS SHOWN THUS
 ARROW INDICATES DIRECTION GRAVE MARKERS
 WILL FACE.

ALL LOTS ARE 2 GRAVE LOTS EXCEPT WHERE
 OTHERWISE NOTED

ALL SINGLE GR. ARE 3'x10' (S)
 ALL 2 GR. LOTS ARE 6'x10'
 ALL 3 GR. LOTS ARE 9'x10'
 ALL 5 GR. LOTS ARE 15'x10'

ADDITIONAL SEC. } G-13

RE-DRAWN FROM OLD SECTION MAP.

HOLY CROSS CEMETERY
 AKRON, OHIO

W. PART SEC. 2

SCALE 1"=20'
 G.C.A.S.M.D.
 MAR. 1956



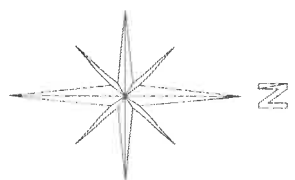
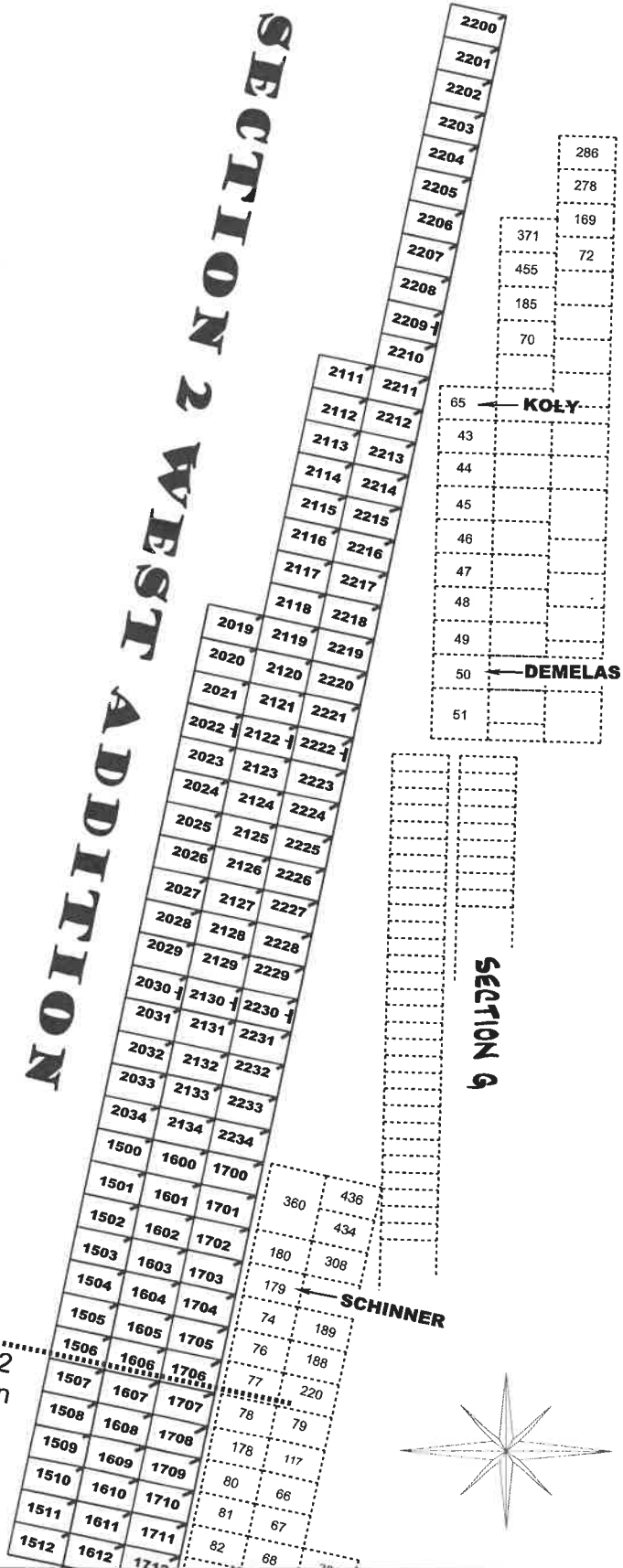
SECTION 2 WEST ADDITION



ALL LOTS ARE 2 GRAVE LOTS EXCEPT WHERE NOTED OTHERWISE:
 2 Grave Lots Are 6' x 10'
 3 Grave Lots Are 9' x 10'

LOT MARKERS ARE LOCATED AT THE UPPER LEFT HAND CORNER AS YOU FACE THE LOTS.

Grave Marker Locations Shown Thus 
 Arrow Indicates Direction Grave Markers Will Face.



Holy Cross Cemetery
Akron, Ohio
SECTION 2 WEST
ADDITION

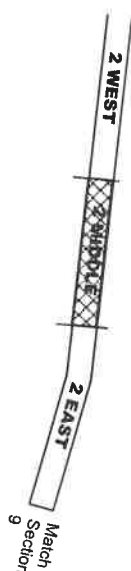
Scale: 1"=30'
 Dec., 2017

J. Bischof

See Section 2
(WEST) Addition

SECTION 2 MIDDLE ADDITION


See Section 2
(EAST) Addition

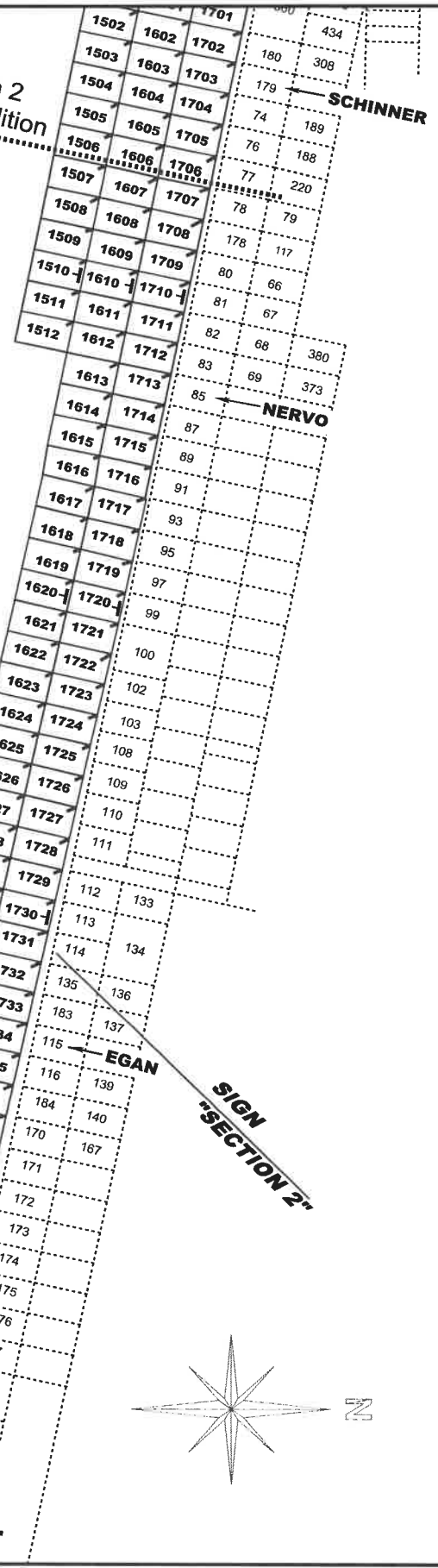


ALL LOTS ARE 2 GRAVE LOTS EXCEPT WHERE NOTED OTHERWISE:

- 2 Grave Lots Are 6' x 10'
- 3 Grave Lots Are 9' x 10'

LOT MARKERS ARE LOCATED AT THE UPPER LEFT HAND CORNER AS YOU FACE THE LOTS.

Grave Marker Locations Shown Thus 
 Arrow Indicates Direction Grave Markers Will Face.

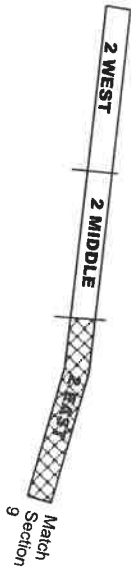


Holy Cross Cemetery
Akron, Ohio
SECTION 2 MID
ADDITION

Scale: 1"=30'
 Dec., 2017

See Section 2 (MID) Addition


SECTION 2 EAST ADDITION



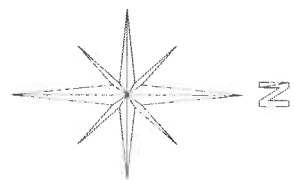
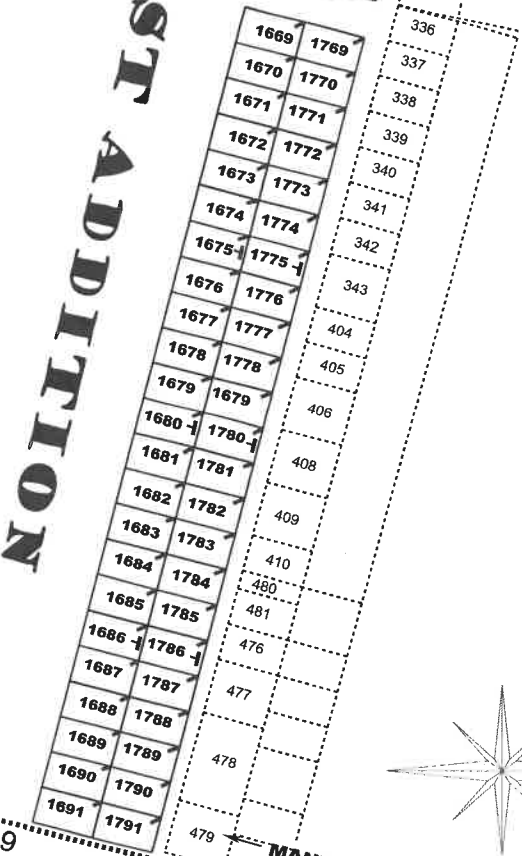
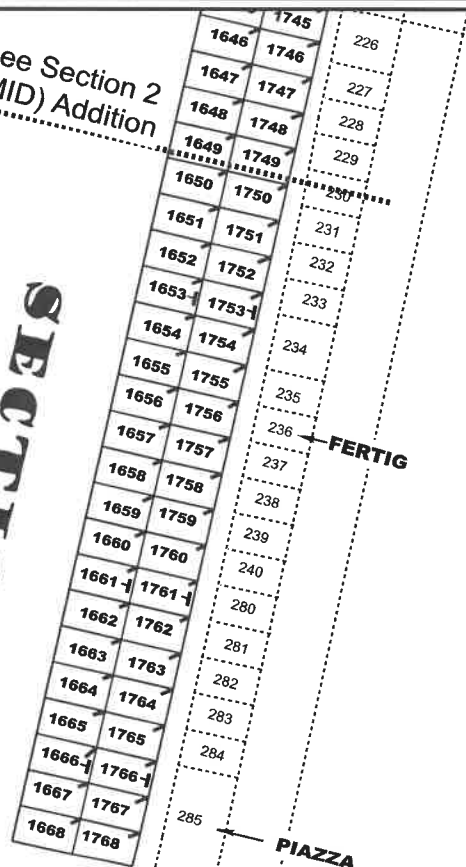
ALL LOTS ARE 2 GRAVE LOTS EXCEPT WHERE NOTED OTHERWISE:

- 2 Grave Lots Are 6' x 10'
- 3 Grave Lots Are 9' x 10'

LOT MARKERS ARE LOCATED AT THE UPPER LEFT HAND CORNER AS YOU FACE THE LOTS.

Grave Marker Locations Shown Thus 

Arrow Indicates Direction Grave Markers Will Face.



Holy Cross Cemetery
Akron, Ohio

SECTION 2 EAST ADDITION

Scale: 1"=30'
Dec., 2017

J. Bischof