

SIGN SECTION 27

CEMETERY ROADWAY

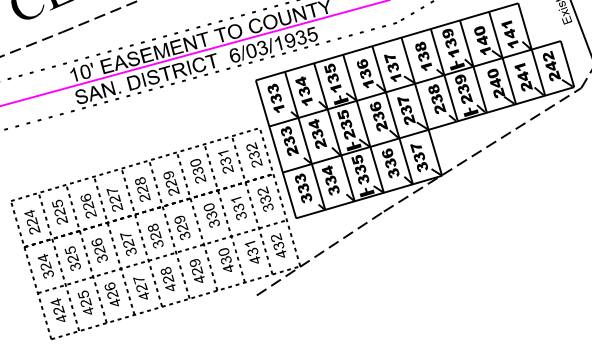
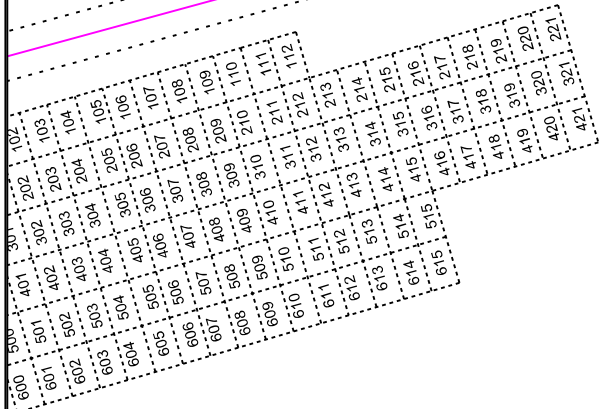
10' EASEMENT TO COUNTY
SAN. DISTRICT. 6/03/1935

SEWER EASEMENT

TOP OF BANK

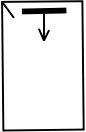
SECTION 28
WEST PART

10' EASEMENT
SAN. DISTRICT



THE LOT NUMBER IS PLACED AT THE UPPER LEFT HAND CORNER OF LOT AS YOU FACE THE LOT AND IS INDICATED AS A SLASH OR TICK MARK.

THE LOCATION OF THE GRAVE MARKERS ARE SHOWN BELOW WITH ARROW INDICATING THE DIRECTION THE GRAVE MARKER WILL FACE.



All lots are 2-grave lots
Unless noted otherwise.

All Lots are 6'-4" x 10'-0"

**HOLY CROSS
CEMETERY**
Akron, Ohio

**SECTION 27
(EAST)**

Scale: 1" = 40' December, 2017
J. Bischof