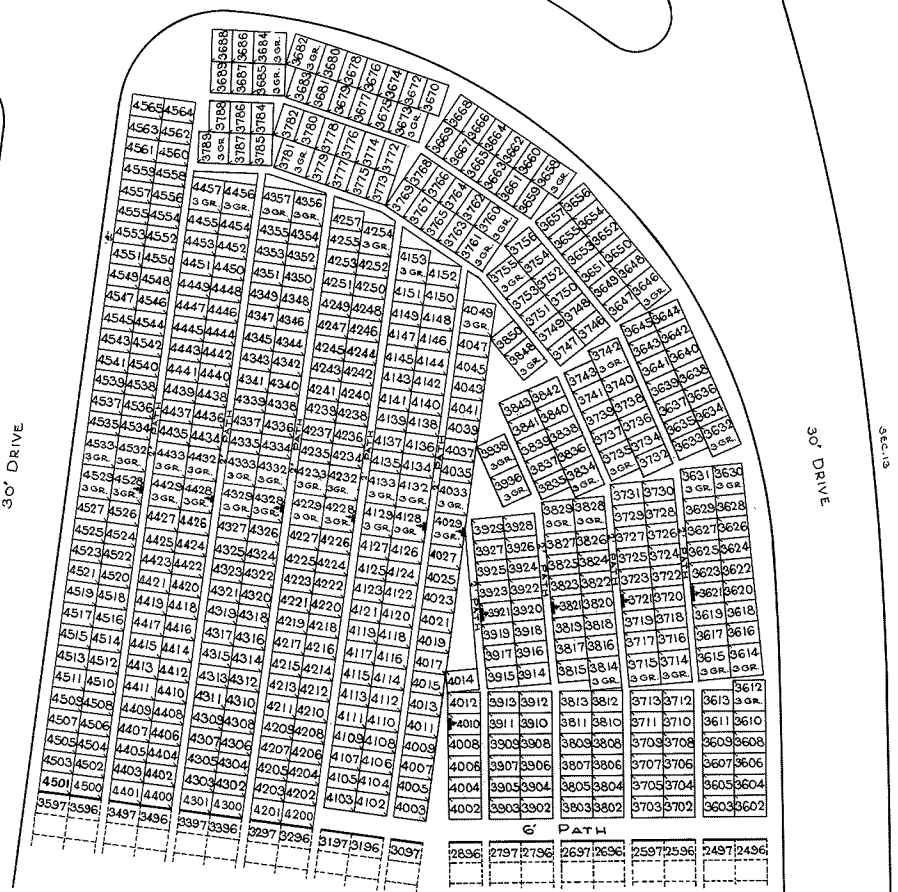


SECTION 12



SEE N. CENTRAL PART

NOTE:  
THE LOT NUMBER IS FOUND IN THE UPPER  
RIGHT HAND CORNER OF LOTS AS YOU FACE  
THE SECTION AND IS INDICATED THUS [ ]

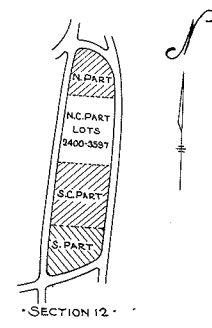
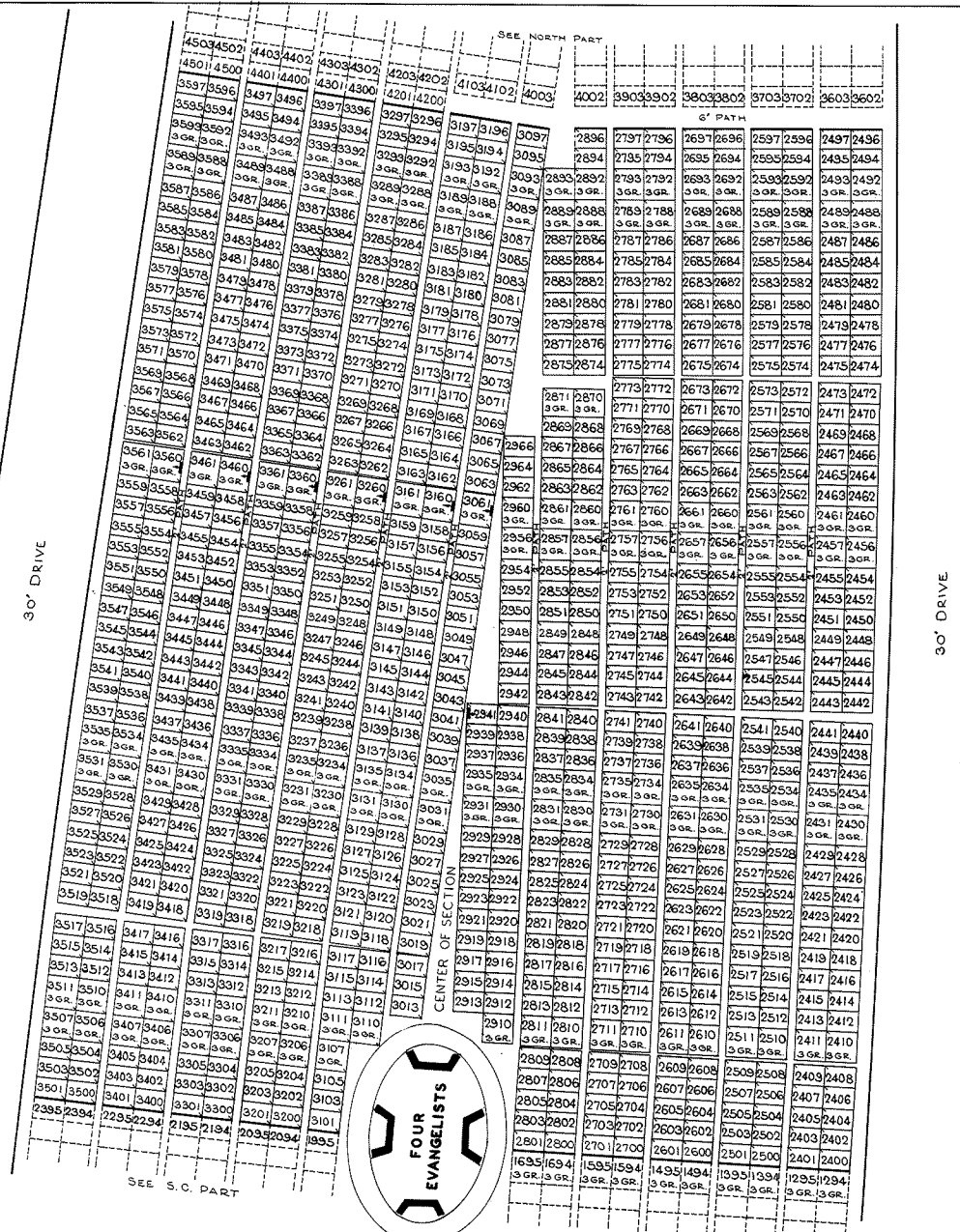
LOCATION OF GRAVE MARKERS SHOWN  
ARROW INDICATES DIRECTION GRAVE  
MARKERS WILL FACE.

ALL LOTS ARE 2 GRAVE LOTS UNLESS NOTED  
OTHERWISE.  
ALL 2 GRAVE LOTS ARE 6'x9'  
ALL 3 GRAVE LOTS ARE 9'x9'

490 - 2 GRAVE LOTS  
51 - 3 GRAVE LOTS  
547 - TOTAL LOTS

**HOLY CROSS CEMETERY**  
CLEVELAND, OHIO  
**NORTH PART**  
**SECTION 12**

SCALE 1"=20' G.C.A. OCTOBER 1961



NOTE:  
THE LOT NUMBER IS FOUND IN THE UPPER  
RIGHT HAND CORNER OF LOTS AS YOU FACE  
THE SECTION AND IS INDICATED THUS [ ]

LOCATION OF GRAVE MARKERS SHOWN  
ARROW INDICATES DIRECTION GRAVE  
MARKERS WILL FACE.

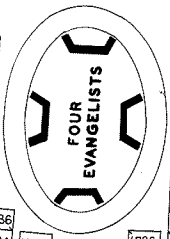
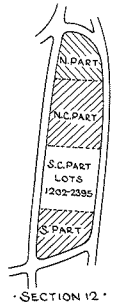
ALL LOTS ARE 2 GRAVE LOTS UNLESS NOTED  
OTHERWISE  
ALL 2 GRAVE LOTS ARE 6'x9'  
ALL 3 GRAVE LOTS ARE 9'x9'

842 2 GRAVE LOTS  
152 3 GRAVE LOTS  
934 TOTAL LOTS

**HOLY CROSS CEMETERY**  
CLEVELAND, OHIO  
**NORTH CENTRAL PART**  
**SECTION 12**

SCALE 1"=20' G.C.A. OCTOBER 1961

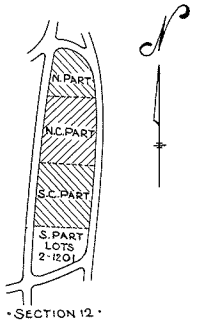
REV. 07-22-64



NOTE :  
 THE LOT NUMBER IS FOUND IN THE  
 UPPER RIGHT HAND CORNER OF LOTS  
 AS YOU FACE THE SECTION AND IS INDICATED [ ]  
 LOCATION OF GRAVE MARKERS SHOWN [ ]  
 ARROW INDICATES DIRECTION GRAVE MARKERS  
 WILL FACE .  
 ALL LOTS ARE 2 GRAVE LOTS UNLESS  
 NOTED OTHERWISE.  
 ALL 2 GRAVE LOTS ARE 6'x9'  
 ALL 3 GRAVE LOTS ARE 9'x3'  
 913 - 2 GRAVE LOTS  
 142 - 3 GRAVE LOTS  
 1055 - TOTAL LOTS

3500	3502	3400	3402	3300	3302	3200	3202	3100	S.E. N.C. PART										
3395	3397	3295	3297	3195	3197	3095	3097	2995	2997	2895	2897	2795	2797	2695	2697	2595	2597	2495	2497
2393	2395	2293	2295	2193	2195	2093	2095	1993	1995	1893	1895	1793	1795	1693	1695	1593	1595	1493	1495
2389	2391	2289	2291	2189	2191	2089	2091	1989	1991	1889	1891	1789	1791	1689	1691	1589	1591	1489	1491
2385	2387	2285	2287	2185	2187	2085	2087	1985	1987	1885	1887	1785	1787	1685	1687	1585	1587	1485	1487
2381	2383	2281	2283	2181	2183	2081	2083	1981	1983	1881	1883	1781	1783	1681	1683	1581	1583	1481	1483
2377	2379	2277	2279	2177	2179	2077	2079	1977	1979	1877	1879	1777	1779	1677	1679	1577	1579	1477	1479
2373	2375	2273	2275	2173	2175	2073	2075	1973	1975	1873	1875	1773	1775	1673	1675	1573	1575	1473	1475
2369	2371	2269	2271	2169	2171	2069	2071	1969	1971	1869	1871	1769	1771	1669	1671	1569	1571	1469	1471
2365	2367	2265	2267	2165	2167	2065	2067	1965	1967	1865	1867	1765	1767	1665	1667	1565	1567	1465	1467
2361	2363	2261	2263	2161	2163	2061	2063	1961	1963	1861	1863	1761	1763	1661	1663	1561	1563	1461	1463
2357	2359	2257	2259	2157	2159	2057	2059	1957	1959	1857	1859	1757	1759	1657	1659	1557	1559	1457	1459
2353	2355	2253	2255	2153	2155	2053	2055	1953	1955	1853	1855	1753	1755	1653	1655	1553	1555	1453	1455
2349	2351	2249	2251	2149	2151	2049	2051	1949	1951	1849	1851	1749	1751	1649	1651	1549	1551	1449	1451
2345	2347	2245	2247	2145	2147	2045	2047	1945	1947	1845	1847	1745	1747	1645	1647	1545	1547	1445	1447
2341	2343	2241	2243	2141	2143	2041	2043	1941	1943	1841	1843	1741	1743	1641	1643	1541	1543	1441	1443
2337	2339	2237	2239	2137	2139	2037	2039	1937	1939	1837	1839	1737	1739	1637	1639	1537	1539	1437	1439
2333	2335	2233	2235	2133	2135	2033	2035	1933	1935	1833	1835	1733	1735	1633	1635	1533	1535	1433	1435
2329	2331	2229	2231	2129	2131	2029	2031	1929	1931	1829	1831	1729	1731	1629	1631	1529	1531	1429	1431
2325	2327	2225	2227	2125	2127	2025	2027	1925	1927	1825	1827	1725	1727	1625	1627	1525	1527	1425	1427
2321	2323	2221	2223	2121	2123	2021	2023	1921	1923	1821	1823	1721	1723	1621	1623	1521	1523	1421	1423
2317	2319	2217	2219	2117	2119	2017	2019	1917	1919	1817	1819	1717	1719	1617	1619	1517	1519	1417	1419
2313	2315	2213	2215	2113	2115	2013	2015	1913	1915	1813	1815	1713	1715	1613	1615	1513	1515	1413	1415
2309	2311	2209	2211	2109	2111	2009	2011	1909	1911	1809	1811	1709	1711	1609	1611	1509	1511	1409	1411
2305	2307	2205	2207	2105	2107	2005	2007	1905	1907	1805	1807	1705	1707	1605	1607	1505	1507	1405	1407
2301	2303	2201	2203	2101	2103	2001	2003	1901	1903	1801	1803	1701	1703	1601	1603	1501	1503	1401	1403
1201	1203	1101	1103	1001	1003	901	903	801	803	701	703	601	603	501	503	401	403	301	303

**HOLY CROSS CEMETERY**  
 CLEVELAND, OHIO  
 SOUTH CENTRAL PART  
**SECTION 12**  
 SCALE 1" = 20' G.C.A. OCTOBER 1961



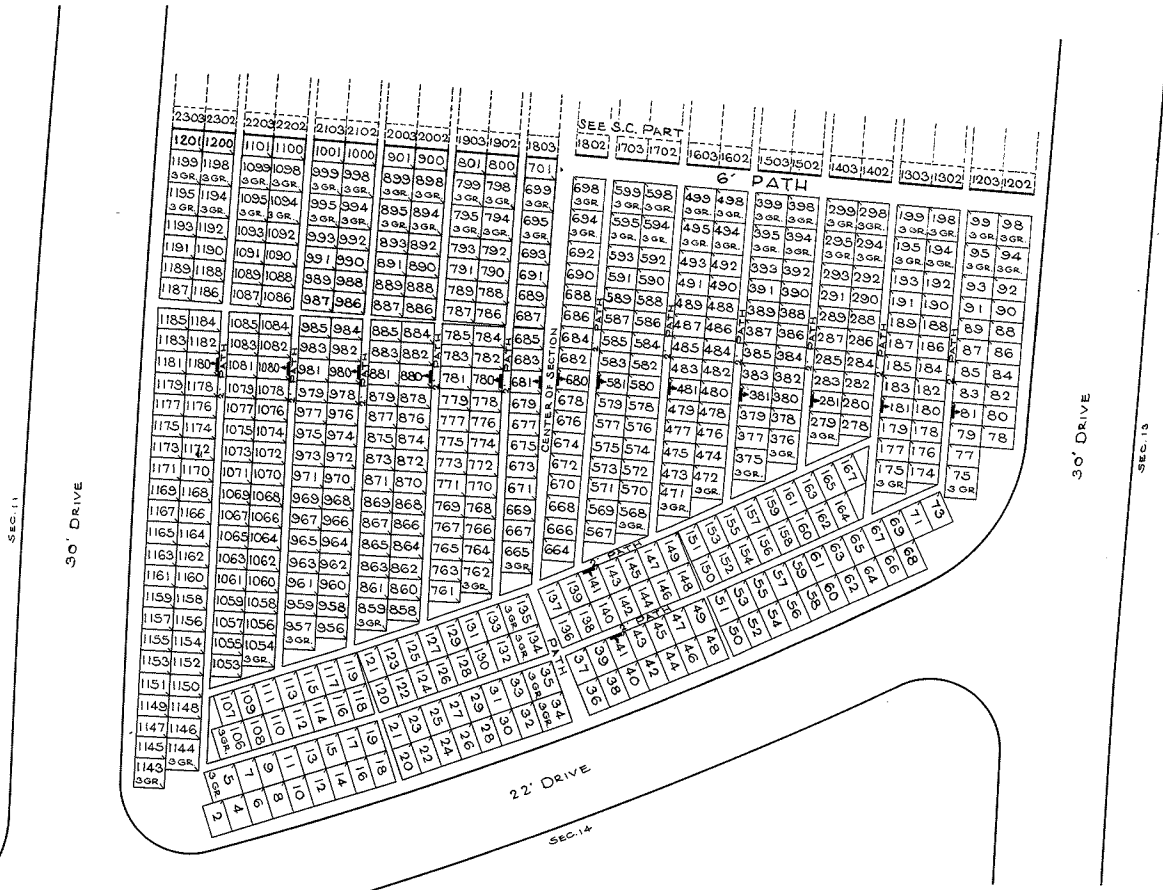
NOTE:  
 THE LOT NUMBER IS FOUND IN THE UPPER  
 RIGHT HAND CORNER OF LOTS AS YOU FACE  
 THE SECTION AND IS INDICATED [ ]

LOCATION OF GRAVE MARKERS SHOWN [ ]  
 ARROW INDICATES DIRECTION GRAVE MARKERS  
 WILL FACE.

ALL LOTS ARE 2 GRAVE LOTS UNLESS NOTED  
 OTHERWISE.

ALL 2 GRAVE LOTS ARE 6'x9'  
 ALL 3 GRAVE LOTS ARE 3'x3'

472 - 2 GRAVE LOTS  
 69 - 3 GRAVE LOTS  
 541 - TOTAL LOTS



**HOLY CROSS CEMETERY**  
 CLEVELAND, OHIO  
**SOUTH PART**  
**SECTION 12**

SCALE 1"=20' G.C.A. OCT. 1961