

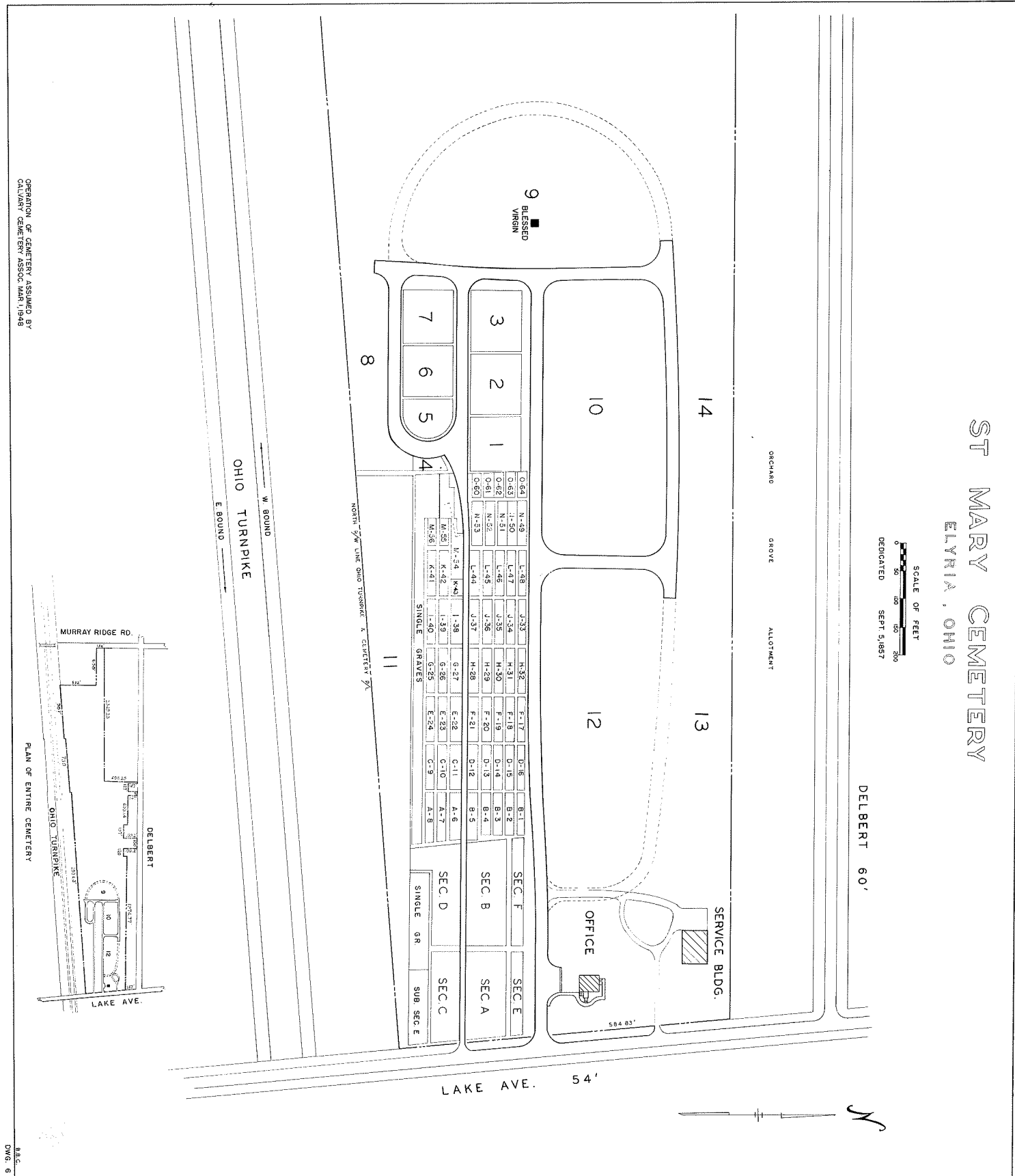
ST MARY CEMETERY

ELYRIA, OHIO

SCALE OF FEET
 0 50 100 150 200
 DEDICATED SEPT 5, 1857

DELBERT 60'

LAKE AVE. 54'



OPERATION OF CEMETERY ASSUMED BY CALVARY CEMETERY ASSOC. MAR. 1948

PLAN OF ENTIRE CEMETERY

22' DRIVE



LOT SUMMARY:
 1493 2 GRAVE LOTS
 104 3 GRAVE LOTS
 8 8 GRAMM LOTS (5'x4.5')
 1 8 GRAMM LOT (7'x3.5')
 1606 TOTAL LOTS

THE LOT NUMBER IS PLACED IN THE UPPER RIGHT HAND CORNER OF THE LOT AS YOU FACE THE LOT AND IS INDICATED THUS (7)

LOCATION OF GRAVE MARKERS SHOWN THUS T

ARROW INDICATES DIRECTION GRAVE MARKERS ALL LOTS ARE 2 GRAVE LOTS EXCEPT WHERE OTHERWISE NOTED.

ALL 2 GRAVE LOTS ARE 5'x3'

ALL 3 GRAVE LOTS ARE 5'x9'

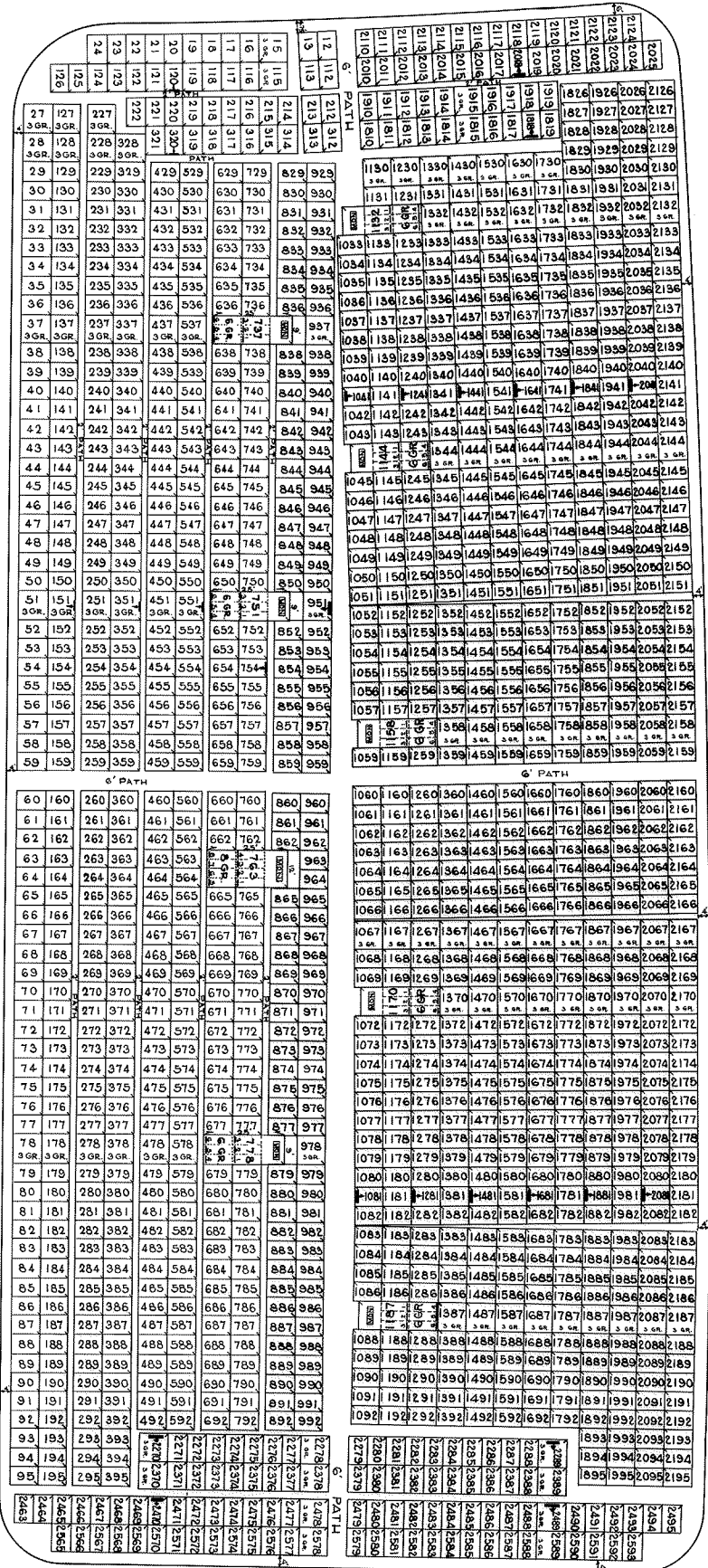
RECORDED MAY 1895

ST MARY CEMETERY
 ELYRIA, OHIO

SECTION 10 -
 SCALE 1" = 20' G. C. A.
 MAY 23, 1895

22' DRIVE

22' DRIVE



278	279	280	281	282	283	284	285	286	287	288	289	290	291	292	293	294	295	296	297	298	299	300
278	279	280	281	282	283	284	285	286	287	288	289	290	291	292	293	294	295	296	297	298	299	300
278	279	280	281	282	283	284	285	286	287	288	289	290	291	292	293	294	295	296	297	298	299	300
278	279	280	281	282	283	284	285	286	287	288	289	290	291	292	293	294	295	296	297	298	299	300
278	279	280	281	282	283	284	285	286	287	288	289	290	291	292	293	294	295	296	297	298	299	300

546 LOT SUMMARY:
 3 GRAVE LOTS (6'x3')
 2 GRAVE LOTS (3'x3')
 6 GRAVE MON LOTS (3'x25')
 8 GRAVE MON LOTS (12'x25')

NOTE:
 THE LOT NUMBER IS PLACED IN THE UPPER
 RIGHT HAND CORNER OF THE LOT AS YOU
 FACE THE LOT AND IS INDICATED THUS ↗
 LOCATION OF GRAVE MARKERS SHOWN THUS ↖
 ARROW INDICATES DIRECTION GRAVE MARKERS
 WILL FACE.

ALL LOTS ARE 2 GRAVE LOTS EXCEPT WHERE
 OTHERWISE NOTED.

22' DRIVE

22' DRIVE

10	110	210	310	410	510	610	710
11	111	211	311	411	511	611	711
12	112	212	312	412	512	612	712
13	113	213	313	413	513	613	713
14	114	214	314	414	514	614	714
15	115	215	315	415	515	615	715
16	116	216	316	416	516	616	716
17	117	217	317	417	517	617	717
18	118	218	318	418	518	618	718
19	119	219	319	419	519	619	719
20	120	220	320	420	520	620	720
21	121	221	321	421	521	621	721
22	122	222	322	422	522	622	722
23	123	223	323	423	523	623	723
24	124	224	324	424	524	624	724
25	125	225	325	425	525	625	725
26	126	226	326	426	526	626	726
27	127	227	327	427	527	627	727
28	128	228	328	428	528	628	728
29	129	229	329	429	529	629	729
30	130	230	330	430	530	630	730
31	131	231	331	431	531	631	731
32	132	232	332	432	532	632	732
33	133	233	333	433	533	633	733
34	134	234	334	434	534	634	734
35	135	235	335	435	535	635	735
36	136	236	336	436	536	636	736
37	137	237	337	437	537	637	737
38	138	238	338	438	538	638	738
39	139	239	339	439	539	639	739
40	140	240	340	440	540	640	740
41	141	241	341	441	541	641	741
42	142	242	342	442	542	642	742
43	143	243	343	443	543	643	743
44	144	244	344	444	544	644	744
45	145	245	345	445	545	645	745
46	146	246	346	446	546	646	746
47	147	247	347	447	547	647	747
48	148	248	348	448	548	648	748
49	149	249	349	449	549	649	749
50	150	250	350	450	550	650	750
51	151	251	351	451	551	651	751
52	152	252	352	452	552	652	752
53	153	253	353	453	553	653	753
54	154	254	354	454	554	654	754
55	155	255	355	455	555	655	755
56	156	256	356	456	556	656	756
57	157	257	357	457	557	657	757
58	158	258	358	458	558	658	758
59	159	259	359	459	559	659	759
60	160	260	360	460	560	660	760
61	161	261	361	461	561	661	761
62	162	262	362	462	562	662	762
63	163	263	363	463	563	663	763
64	164	264	364	464	564	664	764
65	165	265	365	465	565	665	765
66	166	266	366	466	566	666	766
67	167	267	367	467	567	667	767
68	168	268	368	468	568	668	768
69	169	269	369	469	569	669	769
70	170	270	370	470	570	670	770
71	171	271	371	471	571	671	771
72	172	272	372	472	572	672	772
73	173	273	373	473	573	673	773
74	174	274	374	474	574	674	774
75	175	275	375	475	575	675	775
76	176	276	376	476	576	676	776
77	177	277	377	477	577	677	777
78	178	278	378	478	578	678	778
79	179	279	379	479	579	679	779
80	180	280	380	480	580	680	780
81	181	281	381	481	581	681	781

ST. MARY CEMETERY
 ELYRIA, OHIO
 -SECTION 12-
 SCALE 1" = 20' G.C.A. MAY, 1982